

# Dakota County Greenway Vision

## Dakota County Parks, Lakes, Trails and Greenways Vision, 2030

### What's New?

#### GREAT PLACES: Destination Parks

- \* New Regional Park in Vermillion Highlands
- \* More things to do in parks
  - Winter activity area
  - Gathering and celebration areas
  - Swimming and water play areas
- \* More popular "park basics"
  - Enhanced picnicking
  - Biking and accessible trail loops

#### CONNECTED PLACES: Greenway Trails

- \* "Bring parks to people" -- Linear parks connect parks, schools, lake trails, playgrounds, libraries, and the Minnesota and Mississippi Rivers.
- \* Walking, biking, and in-line skating
- \* Public agencies work together to create 200 miles of greenways using mostly publicly-owned land.

#### PROTECTED PLACES: Green Infrastructure

- \* Enhance and protect park resources
- \* Protect stream corridors in public/private partnerships
- \* Protect natural areas and open space in public/private partnerships

#### DAKOTA COUNTY PARK SYSTEM and COLLABORATIVE OPEN SPACE PROTECTION

- Dakota County Parks
- Federal, State, and Other Regional Open Space
- Existing and Planned Regional Greenways
- Regional Status Discussion with Metropolitan Council
- Example City Greenways (route concepts)
- Stream Conservation Corridors and Greenways
- Destinations: City Parks, Schools, Lakes, Libraries
- Privately-Owned Protected Farmland (FNAP)
- Private/Public Protected Natural Areas (FNAP)
- Potential Rail to Trail Opportunities

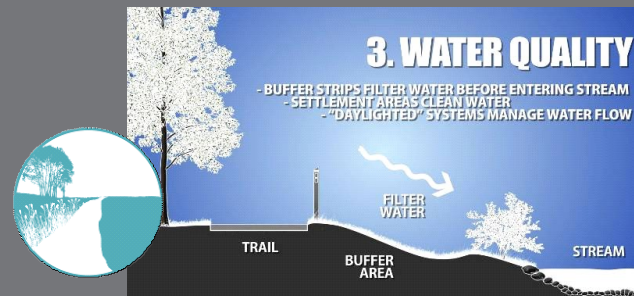
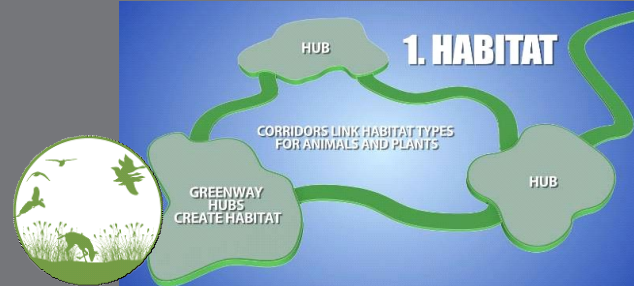
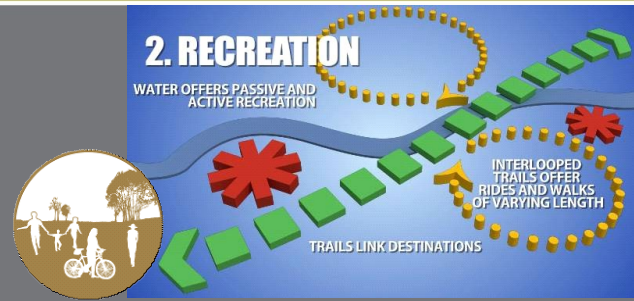


Lake Marion/South Creek Greenway MASTER PLAN

# Dakota County Greenway Vision

Establish a County-wide system of interconnected greenways that provide multiple functions:

- corridor-based **recreation**
- **non-motorized transportation** infrastructure
- ecologically functioning **habitat**
- improved **water quality**



Lake Marion/South Creek  
Greenway  
MASTER PLAN

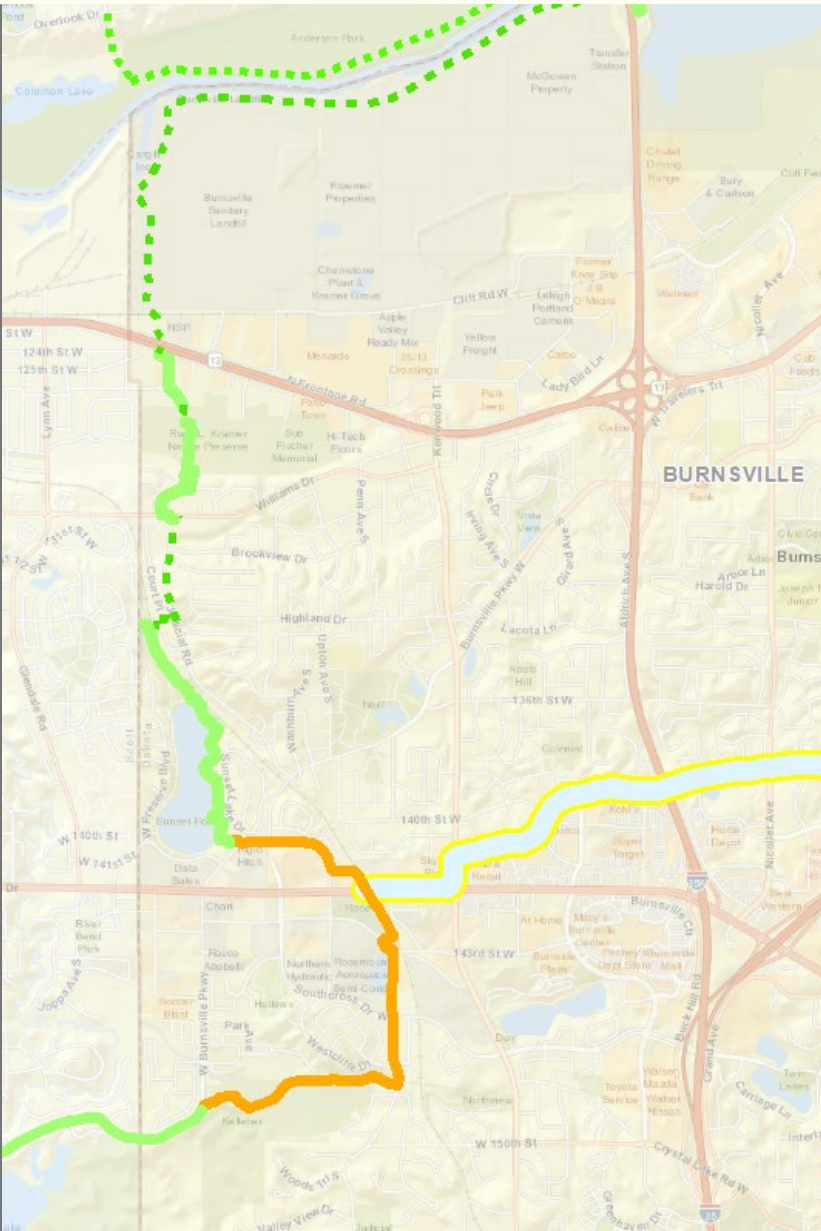
# Lake Marion/South Creek Greenway

## Minnesota River to South Creek (18 miles)

- Connects to Minnesota River Greenway at Sue Fischer Memorial Park
- Burnsville business park and neighborhood parks
- Murphy-Hanrehan Regional Park Reserve
- Lake Marion
- Downtown Lakeville
- South Creek to downtown Farmington

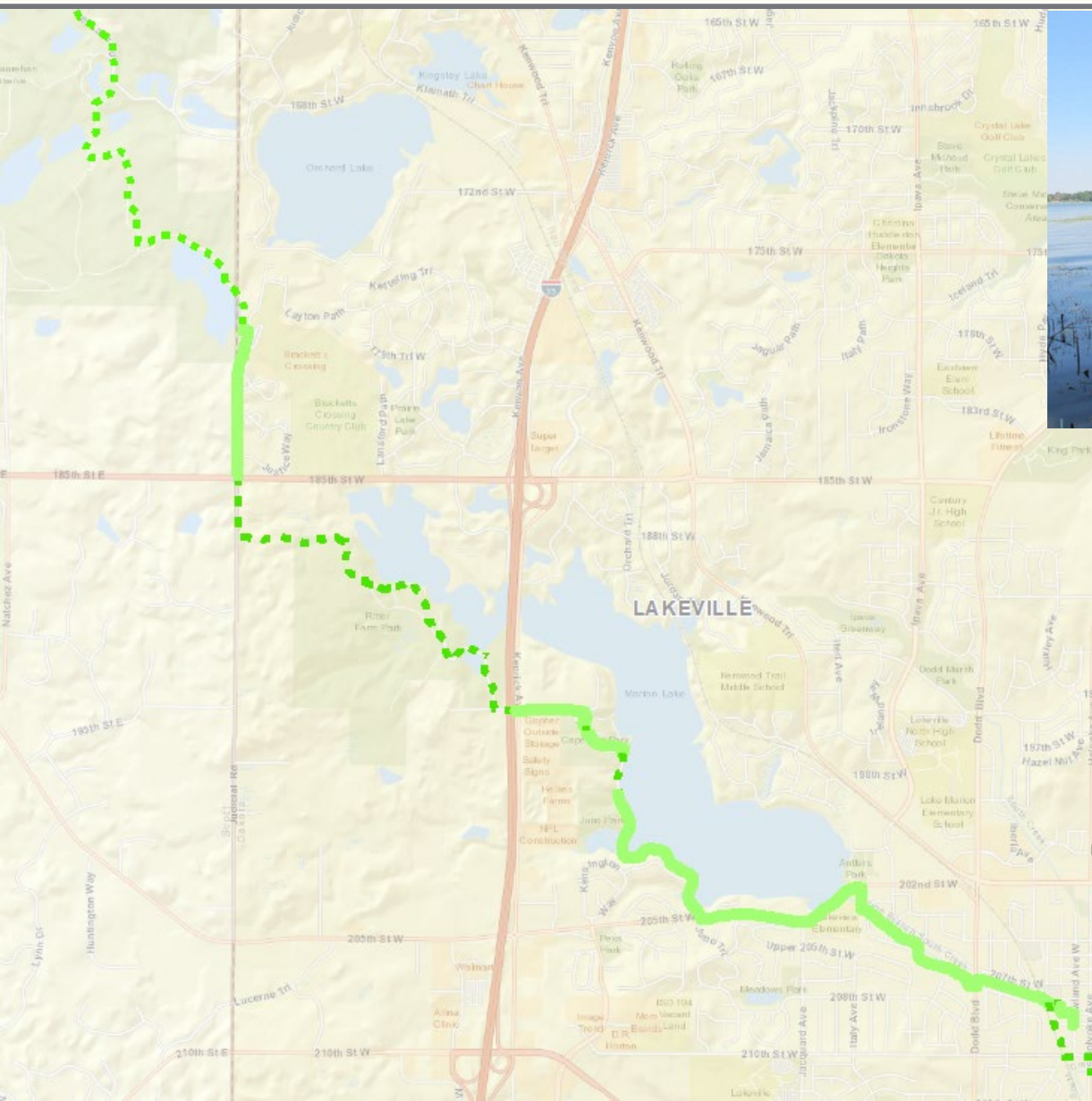


# Burnsville & Savage



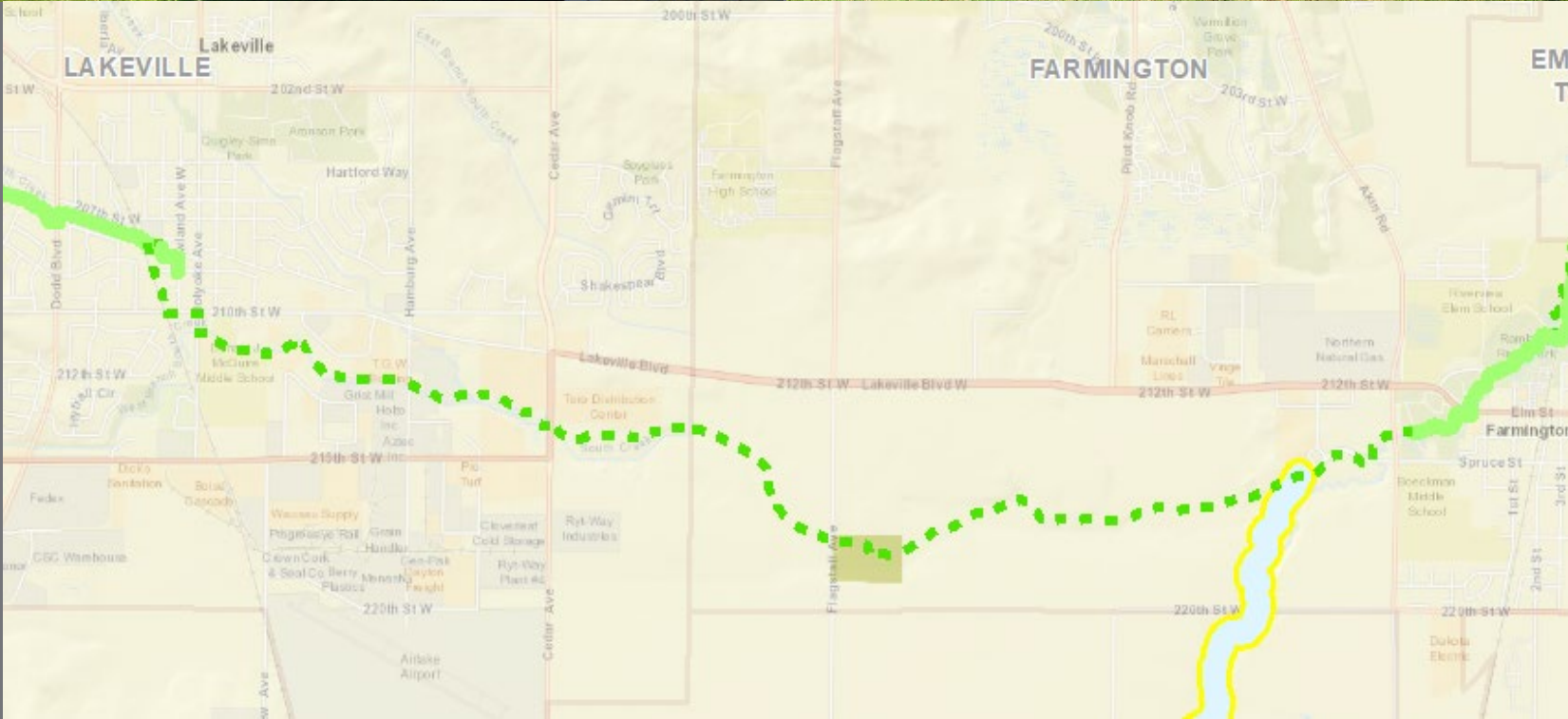
Lake Marion/South Creek  
Greenway  
MASTER PLAN

# Lakeville



# Lake Marion/South Creek Greenway MASTER PLAN

# Farmington



Lake Marion/South Creek  
Greenway  
MASTER PLAN